

Characterization of home-acquired blood pressure time series using multiscale entropy for patients treated against kidney cancer

Antoine JAMIN¹, Jean-Baptiste FASQUEL¹, Anne HUMEAU-HEURTIER¹,
Pierre ABRAHAM², Georges LEFTHERIOTIS³, and Samir HENNI^{1,2}

¹ LARIS, Université d'Angers, 62 Avenue Notre-Dame du Lac, 49000 Angers, France

² University Hospital Center of Angers, Vascular Departement and MITOVASC,
Angers, France

³ University Hospital Center of Nice, Vascular Departement, Nice, France

Abstract. This study deals with the telemonitoring, with a connected tensiometer, of 16 patients treated for a kidney cancer. Each one of these patients recorded his/her blood pressure at home during 63 days and the data was sent to his/her medical doctor. At the same time they were treated with antihypertensive medication when necessary. In this work, our goal was to analyze the complexity of the blood pressure time series. For this purpose, we proposed to use the refined composite multiscale entropy (RCMSE) measures. Our results show that the patterns of RCMSE through temporal scales evolve with the antihypertensive medication. The later might therefore have an impact on home-acquired blood pressure complexity. RCMSE could therefore be an interesting information theory-based tool to study home-acquired physiological data.

Key words: telemonitoring, connected tensiometer, blood pressure, time series, multiscale entropy, clustering, irregularity, complexity

1 Introduction

Kidney cancer is the 12th kind of cancer in terms of frequency in the world. It represents 338,000 new cases diagnosed in 2012 [1]. It can be treated by a VEGF¹ chemotherapy that consists in eliminating the capillaries of the tumor. However such a treatment can lead to blood pressure increases. This is why antihypertensive medication are often given to the patients. Our work deals with patients treated against a kidney cancer using a VEGF chemotherapy. During the treatment, patients were daily monitored at home using a connected tensiometer (see Figure 1). Such an IoT-based sensor [2, 3] facilitates the following of blood pressure increases. Our goal herein is to study, with the refined composite multiscale entropy (RCMSE), the complexity of the blood pressure time series.

¹ Vascular Endothelial Growth Factor

RCMSE is an improved version of the multiscale entropy (MSE). MSE is based on the use of sample entropy, a measure of time series irregularity, at different time scales [4].

The paper is organized as follows: the MSE and RCMSE algorithms and the measurement procedure are introduced in Section 2. Our results are then detailed and discussed in Section 3. The paper ends with a Conclusion.

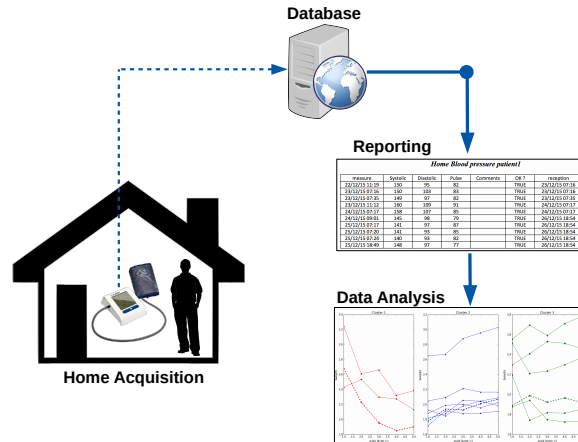


Fig. 1: Project overview

2 Materials and Methods

2.1 Sample Entropy

Pincus proposed to quantify the irregularity of time series with approximate entropy (ApEn) [5]. To overcome the limitation of ApEn, sample entropy has later been introduced [6]. Sample entropy is a conditional probability measure that quantifies the likelihood that a sequence of m consecutive data points – that matches another sequence of the same length – will still match the other sequence when their length is increased by one sample ($m+1$) [4]. Sample entropy is computed as:

$$SampEn(m, r, N) = -\ln \frac{A^m(r)}{B^m(r)}, \quad (1)$$

where r is the tolerance, m is the sample length, $A^m(r)$ and $B^m(r)$ are, respectively, the probability that two sequences will match for $m+1$ and m points.

2.2 Multiscale entropy

MSE allows to quantify the complexity of time series by measuring its irregularity at different time scales [4, 6].

The MSE algorithm is composed of three steps [7, 8]

1. a coarse-graining procedure is used to derive a set of time series representing the system dynamics on different time scales. For a monovariate discrete signal x of length N , the coarse-grained time series y^τ is computed as:

$$y_j^{(\tau)} = \frac{1}{\tau} \sum_{i=(j-1)\tau+1}^{j\tau} x_i, \quad (2)$$

where τ is the scale factor and $1 \leq j \leq \frac{N}{\tau}$. The length of the coarse-grained time series is N/τ .

2. computation of the sample entropy for each coarse-grained times series.
3. plot of the sample entropy for each time scale τ .

2.3 Refined composite multiscale entropy

MSE generates some undefined values for short time series [9]. When large scale factors τ are used, the coarse-grained time series may have a small number of samples. This may lead to undefined sample entropy values. This is why RCMSE has been introduced [9].

In RCMSE, the coarse-grained signal $y_k^{(\tau)}$ is computed for different values of a parameter k :

$$y_{k,j}^{(\tau)} = \frac{1}{\tau} \sum_{i=(j-1)\tau+k}^{j\tau+k-1} x_i, \quad (3)$$

where τ is the scale factor, x is the original signal, $1 \leq j \leq \frac{N}{\tau}$ and $1 \leq k \leq \tau$.

The RCMSE at scale τ is calculated using the following formulation:

$$RCMSE(x, \tau, m, r) = -\ln \frac{\sum_{k=1}^{\tau} n_{k,\tau}^{m+1}}{\sum_{k=1}^{\tau} n_{k,\tau}^m}, \quad (4)$$

where r is the tolerance, m is the sample length, $n_{k,\tau}^{m+1}$ and $n_{k,\tau}^m$ are the number of matched vector pairs (computed on $y_k^{(\tau)}$) for $m+1$ and m , respectively.

2.4 Measurement procedure

The study was conducted on 16 patients (5 women, 11 men; $171 \text{ cm} \pm 9 \text{ cm}$; $87 \text{ kg} \pm 29 \text{ kg}$; $62 \text{ years} \pm 8 \text{ years}$). The 16 patients were daily monitored, during 63 days, using a connected tensiometer [10]. Each recorded time series (Systolic Blood Pressure (SBP) and Diastolic Blood Pressure (DBP) time series) had therefore 63 samples. In our work, the mean blood pressure (MBP), defined as:

$$MBP = \frac{SBP + 2 \times DBP}{3}, \quad (5)$$

was processed by RCMSE.

2.5 Parameters used

To compute RCMSE, 3 parameters have to be set : m , r , and τ . It has been recommended that, to compute the sample entropy, the time series length has to be between 10^m and 20^m [6]. Our data have 63 samples. We therefore have chosen $m = 1$ and time scale $\tau \leq 5$. Moreover, we have chosen $r = 0.15 \times \sigma$ (where σ is the standard deviation of time series at scale factor $\tau = 1$) [8].

3 Results and Discussion

Figure 2 presents three examples of MBP data. Figure 3 shows the corresponding RCMSE curves. By analyzing all the time series we observe 3 kinds of RCMSE patterns : global decreasing sample entropy with scales (cluster 1), global increasing sample entropy with scales (cluster 2), and non-monotonic sample entropy values with scales (cluster 3); see Figure 4.

If sample entropy increases with scales, this means that the signal contains complex structures across multiple scales. If the sample entropy decreases with scales, this means that the signal has information only on the shortest scale (similarly to white noise [8]). In the undetermined case, no definite conclusion can be drawn.

We can observe that the signals of cluster 1 are similar to RCMSE of a white noise: the signal irregularity decreases with scale. Cluster 2 corresponds to an increase of the signal irregularity with scales. Cluster 3 corresponds to an intermediate situation.

These clusters have been compared with the number of hypertensive medication taken by the patients. As reported in Table 1, for cluster 1, patients received only 1 antihypertensive treatment. For cluster 2, patients received 2 antihypertensive treatments. For cluster 3, patients received 3 antihypertensive treatments.

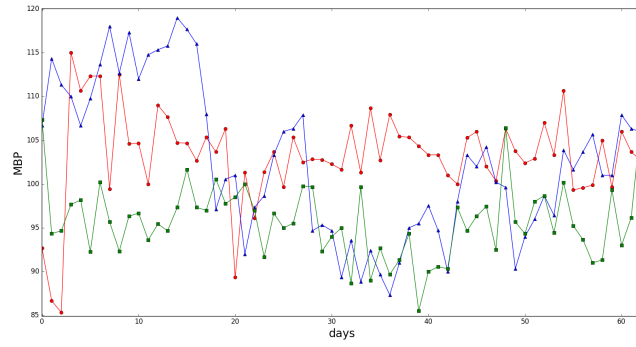


Fig. 2: Representative signals for each cluster (cluster 1 : red — cluster 2 : blue — cluster 3 : green)

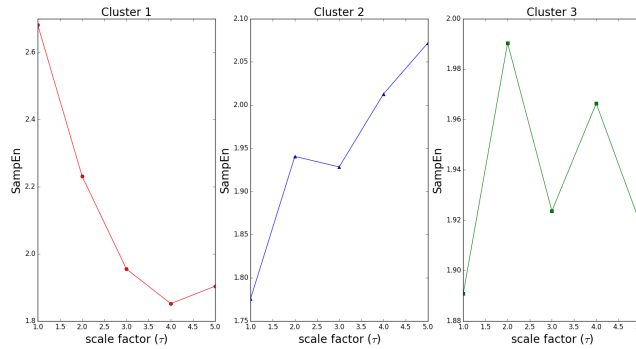


Fig. 3: RCMSE and clusters of representative signals shown in Figure 2.

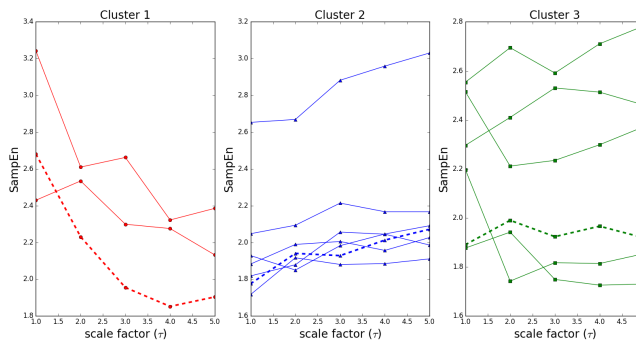


Fig. 4: RCMSE and clusters. Original signals leading to dotted RCMSE are represented in Figure 2

Cluster	Cluster 1	Cluster 2	Cluster 3
RCMSE shape	decrease	increase	undetermined
#patients	3	7	6
#medication	1	2	3

Table 1: Clusters, RCMSE and #medication

Anti-hypertensive medication may therefore play a role in the complexity of mean blood pressure time series.

4 Conclusion

In this work we studied the complexity of blood pressure time series with RCMSE. Our work shows that antihypertensive medication might have an influence on mean blood pressure complexity. Our study shows that the complexity of data extracted by connected devices might have an interest for physiological purposes. RCMSE could now be applied to other IoT-based physiological data. Next step of this work will consist in identifying patient profiles in order to customize the telemonitoring.

References

1. World Cancer Research Fund International, <http://www.wcrf.org> [may 2017]
2. Y. Yin, Y. Zeng, X. Chen, Y. Fan: The internet of things in healthcare: An overview. *Journal of Industrial Information Integration*, Volume 1, 3–13 (2016).
3. S. M. R. Islam, D. Kwak, M. H. Kabir, M. Hossain, K. S. Kwak: The Internet of Things for Health Care: A Comprehensive Survey. *IEEE Access*, Volume 3, 678–708 (2015).
4. A. Humeau-Heurtier: The Multiscale Entropy Algorithm and Its Variants: A Review. *Entropy*, Volume 17, 3110–3123 (2015)
5. S. M. Pincus: Approximate entropy as a measure of system complexity. *Proceedings of the National Academy of Sciences*, Volume 88, 2297–2301 (1991).
6. J. S. Richman, J. R. Moorman: Physiological time-series analysis using approximate entropy and sample entropy. *American Journal of Physiology - Heart and Circulatory Physiology*, Volume 278, H2039–H2049 (2000).
7. M. Costa, A. L. Goldberger, C.-K. Peng: Multiscale Entropy Analysis of Complex Physiologic Time Series. *Physical Review Letters*, Volume 89, 068102 (2002).
8. M. Costa, A. L. Goldberger, C.-K. Peng: Multiscale entropy analysis of biological signals. *Physical Review E*, Volume 71, 021906 (2005).
9. S.-D. Wu, C.-W. Wu, S.-G. Lin, K.-Y. Lee, C.-K. Peng: Analysis of complex time series using refined composite multiscale entropy. *Physics Letters A*, Volume 378, 1369–1374 (2014).
10. Blood Pressure Monitoring - I.E.M. GmbH, <http://www.iem.de/en/health-management/blood-pressure-monitoring.html> [may 2017]